



FROM 8 TO 24 CHANNELS  
OS ON SSD

REALTIME RECORDING  
ON EVERY CHANNEL

# HYBRID DVR/NVR



ABOVE: iPhone DISPLAY



ABOVE: iPad DISPLAY



ABOVE: LOCAL PC DISPLAY



- ✓ FLEXIBLE
- ✓ H.264 COMPRESSION
- ✓ O.S ON SSD
- ✓ REMOTE ACCESS
- ✓ iPhone, iPod Touch, iPad client
- ✓ SIMPLE OPERATION
- ✓ TCP/IP
- ✓ CONTINUOUS RECORDING
- ✓ ALARM RECORDING
- ✓ MOTION RECORDING
- ✓ POS INTERFACING
- ✓ ACCESS CONTROL INTERFACING
- ✓ IP CAMERA SUPPORT

## CAMVEX VIDEO SURVEILLANCE SYSTEMS

SYSTEM DESIGN - SALES - DISTRIBUTION - RENTAL

CCTV

CAMVEX (VIC) PTY LTD  
1860 DANDENONG RD,  
PHONE 03 9543 4844  
info@camvex.com.au

A.B.N. 86 100 905 048  
CLAYTON VIC 3168  
FAX 03 9543 4144  
www.camvex.com.au

CCTV

# BRIDGING TECHNOLOGIES

## OS on SSD

Most PC based DVR's offer user friendly operation but with compromised system stability as the Windows operating system is generally installed on the primary HDD. The Ultima series uses an SSD ( Solid State Disk ) to hold the operating system providing greater system stability. Only video/audio data is recorded to HDD (Hard Disk Drive).

## Hard Disk Drives

Ultima units can be configured in various types of cases with a choice of internal or removable HDD's (Hard Disk Drives). Removable HDD's offer the benefit of quick removal of large amounts of video data for archiving or review off site. They can be connected to a PC with an optional USB HDD enclosure and data searched using the Ultima software provided. Replacing failed HDD's and capacity upgrades are quicker and more cost-effective with removable HDD's.

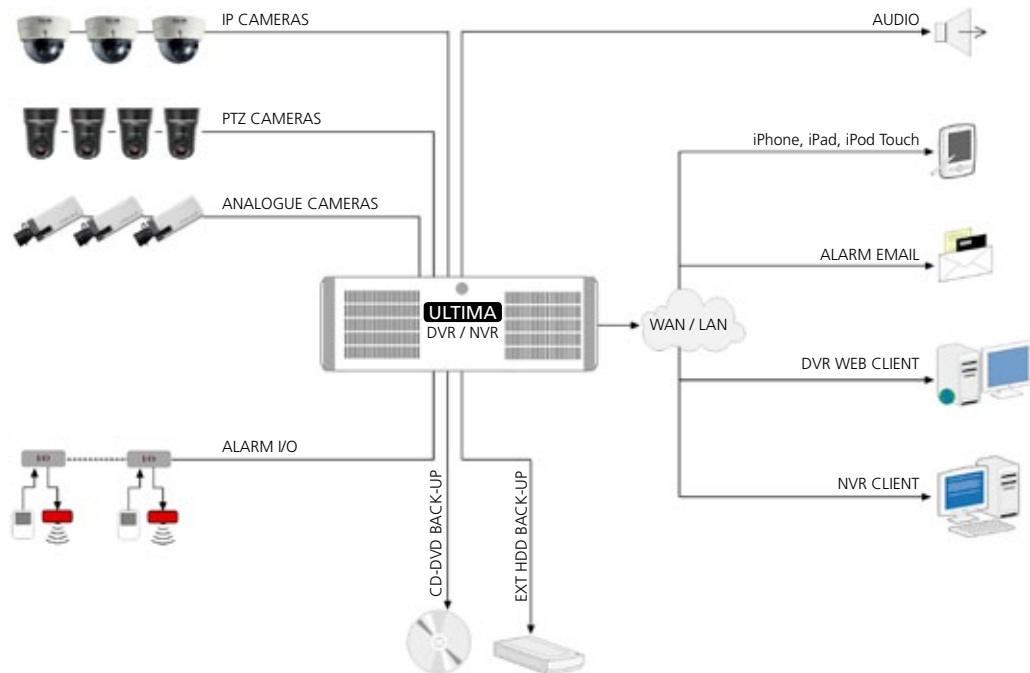


RIGHT: ULTIMA WITH REMOVABLE HDD'S

## Hybrid DVR/NVR

The Ultima series of DVR's can be deployed in a standard DVR configuration or as a NVR in an IP Video application.

It supports conventional analogue CCTV cameras as well as select IP cameras (PAL and megapixel resolution) and IP video encoders.



## H.264 Real Time Recording with Audio

Ultima DVR's utilise H.264 (MPEG-4 part 10) hardware compression with selectable recording frame rates up to real time (25 images per second) per channel.

Frame rates are subject to Ultima capture card model and recording resolution selected.

All models include an audio input per analogue camera input.

H.264 hardware compression is well suited to many surveillance applications as it provides higher picture quality for less HDD use compared to many other compression methods.

# BRIDGING TECHNOLOGIES

## Local Display

The local SVGA monitor output of the Ultima series permits single or multi-camera display up to 64 inputs. It has a user friendly "point and click" mouse driven operation with labelled icons for launching other modes such as Setup, PTZ Control and Play-back etc. Instant play-back is available from the live display mode for a quick review of a single camera. This is useful if wanting to quickly play back a scene that has occurred a few seconds or minutes ago.

## Recording Modes

The Ultima DVR's support a choice of recording modes including Continuous, Motion (function of Ultima software) or via External Alarm. These recording modes are selectable in a schedule individually per camera per hour per day of the week.



ABOVE: LOCAL DISPLAY

## Interfacing to POS and Access Control Systems

POS and Access Control Systems can be interfaced to the Ultima series of DVR's via a compatible RS-232 serial or TCP/IP output. POS transaction or Access Control data can then be overlaid onto the image of an associated camera providing potentially valuable information. This data can then be searched from the POS search mode using Text Filters to find information fast. An example of a Text Filter search may relate to the number of "NO SALES" at a cash register.

## Play-back

The Ultima series of DVR's provide fast and user friendly search options on play-back. Recorded data from cameras are shown on a time line colour coded to the Recording Mode selected such as Continuous or Motion etc. Cameras can be played back individually or multiple cameras synchronised (the quantity is limited subject to recorded resolution and frame rate) Features include fast forward, pause, frame advance, smart search (post record motion search) and zoom on play-back (image magnification).



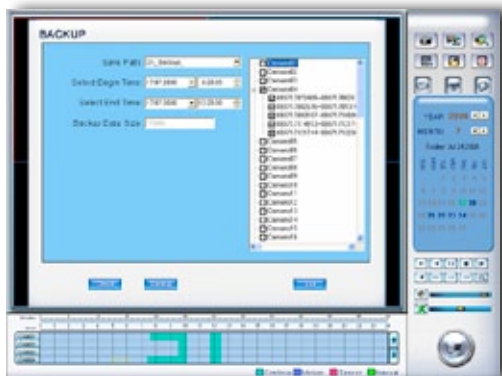
ABOVE: Play-back SCREEN

## Incident Archiving

Backing up incidents is a simple process with the Ultima series. Select the date, start time, end time and cameras required (1 or multiple cameras). Data can be backed up to CD-R and/or DVD-R disc via the Ultima's internal DVD burner.

The Backup Data Size check feature confirms the amount of data selected to avoid issues with exceeding the capacity of the removable media. The backup can be performed direct to the DVD burner and will automatically include a compatible self-executable player that can be run directly from the CD or DVD disc without installation onto a PC. The self-executable player is beneficial to users that can't install software onto a PC because of limited access rights.

The backup file is encrypted and preserved in the native file format so it is compliant with recommended guidelines for admissibility of digital CCTV evidence in court. Backups can also be performed over a network, to USB HDD's and USB memory sticks or to the dedicated backup removable HDD available on some Ultima models.



ABOVE: BACK-UP SCREEN

## iPhone, iPad, iPod Touch live viewing client

Free app to view cameras from Ultima DVR's on iPhones, iPads and iPod Touch mobile devices.

## \* SPECIFICATIONS

	8 Channel	16 Channel	24 Channel
<b>Video Compression</b>	H.264 (MPEG 4 PART 10)		
<b>Operating System</b>	Windows 7™ on SSD		
<b>Preview Resolution</b>	704x576		
<b>Recording Resolution</b>	352x288 (CIF), 528x384 (DCIF), 704x576 (4CIF)		
<b>Communications Ports</b>	1 x RJ45 UTP 10Mbps /100Mbps / 1Gbs (auto-sensing), 1 x D9 (RS-232), 6x USB ports		
<b>Video Standard</b>	PAL and NTSC		
<b>Video Input Type</b>	8 BNC channels per card.		
<b>No of Video Inputs</b>	8	16	24
<b>Video Output</b>	1x 15 pin D sub SVGA and optional Matrix Card		
<b>Frame Rate(per camera)</b>	Selectable from 1 - 25 (PAL) 1 - 30 (NTSC)		
<b>Stream Type</b>	Video / Video / audio		
<b>PTZ support</b>	Simultaneous support for multiple brands via multiple (optional) ports		
<b>Video Storage OPTIONS(standard)</b>	1 Tera Byte - 4 Tera Bytes		
<b>Video Storage OPTIONS(industrial)</b>	1 Tera Byte - 12 Tera Bytes		
<b>Removable HDD</b>	Industrial (Optional on Standard)		
<b>No of Audio inputs</b>	8	16	24
<b>Audio Compression</b>	Ogg Vorbis, Audio bit rate 16Kbps		
<b>Alarm Input/ Output(optional)</b>	8 in 4 out	16 in 16 out	24 in 24 out
<b>Motion Detection</b>	Configurable on every channel		
<b>Video Backup</b>	Burn direct to CD/DVD or external USB device		
<b>VGA Resolutions</b>	1024x768, 1280x768, 1280x1024		
<b>Operating Environment</b>	5° - 40°C (humidity 10%-90% non condensing)		
<b>Power Supply</b>	240VAC, 50Hz		
	*Specifications and features are subject to change without notice.		DOC NO: ULT001 20100806_V1.1

### CAMVEX VIDEO SURVEILLANCE SYSTEMS

SYSTEM DESIGN – SALES – DISTRIBUTION – RENTAL

**CCTV**

CAMVEX (VIC) PTY LTD  
1860 DANDENONG RD,  
PHONE 03 9543 4844  
info@camvex.com.au

A.B.N. 86 100 905 048  
CLAYTON VIC 3168  
FAX 03 9543 4144  
www.camvex.com.au

**CCTV**