

MAXIMA

REAL TIME RECORDING



M.R.S. SERIES
MIXED RESOLUTION

REAL TIME RECORDING
ON EVERY CHANNEL

DVR/NVR



**IPHONE
COMPATIBLE**



ABOVE: CLIENT SOFTWARE

- ✓ H.264 COMPRESSION
- ✓ IPHONE COMPATIBILITY
- ✓ EMBEDDED O.S.
- ✓ REMOTE ACCESS
- ✓ LARGE STORAGE OPTIONS
- ✓ SIMPLE OPERATION
- ✓ CONTINUOUS RECORDING
- ✓ ALARM RECORDING
- ✓ MOTION RECORDING

CAMVEX VIDEO SURVEILLANCE SYSTEMS
SYSTEM DESIGN – SALES – DISTRIBUTION – RENTAL

CCTV

CAMVEX (VIC) PTY LTD
1860 DANDENONG RD,
PHONE 03 9543 4844
info@camvex.com.au

A.B.N. 86 100 905 048
CLAYTON VIC 3168
FAX 03 9543 4144
www.camvex.com.au

CCTV

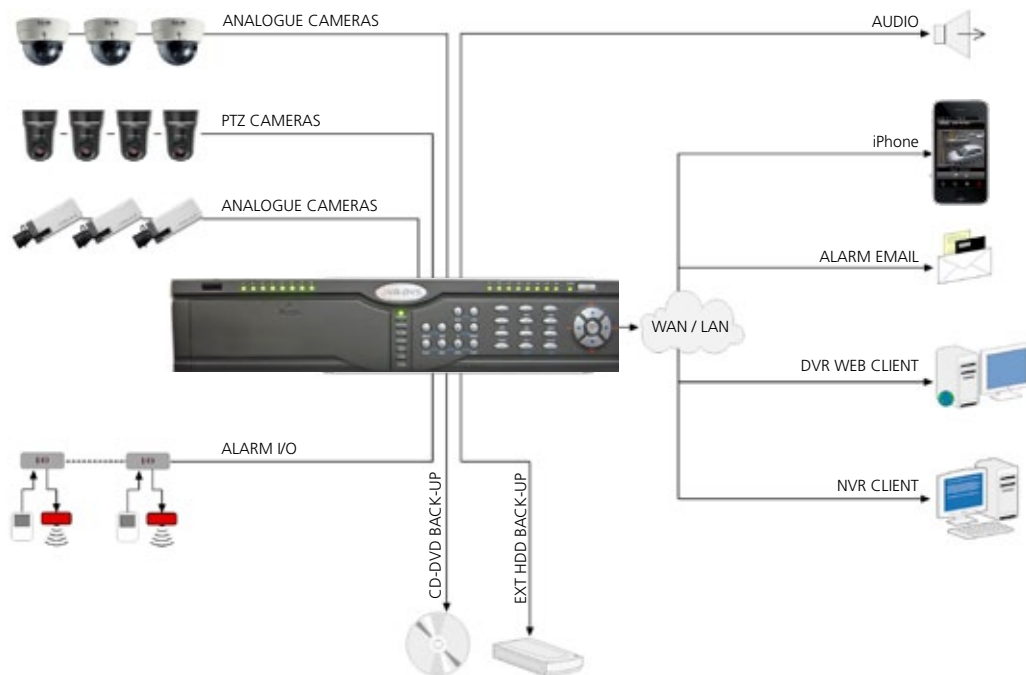
CONTINUOUS UNINTERRUPTED VIDEO

Maxima MRS Series

The Maxima series of DVR/NVR products provide continuous, uninterrupted video and audio recording on every channel. These Embedded RTOS (Real Time Operating System) units offer the maximum in reliability and performance required today.

Hard Disk Drives

Maxima units can be configured in various ways, up to 8 internal HDD's or a removable hard disk drive which offers the benefit of quick removal of large amounts of video data for archiving or review off-site. They can be connected to a PC with an optional USB HDD enclosure and data searched using the Client DVR software provided.



H.264 Real Time Recording with Audio

Maxima DVR's utilise H.264 (MPEG-4 part 10) hardware compression with selectable recording frame rates up to real time (25 images per second) per channel.

All models include an audio input per camera input.

H.264 hardware compression is well suited to many surveillance applications, as it provides higher picture quality for less HDD use compared to many other compression methods.

CONTINUOUS UNINTERRUPTED VIDEO

Local Display

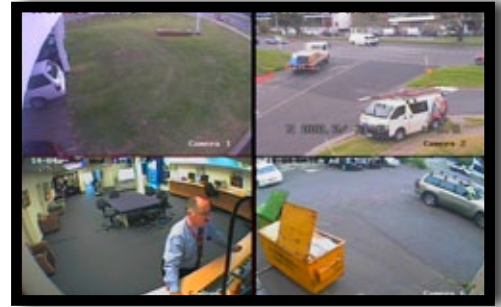
The local SVGA or composite monitor output permits single or multi-camera display up to 16. It has a user friendly "point and click" mouse driven operation via mouse, IR remote, or direct from the DVR front panel interface.

Recording Modes

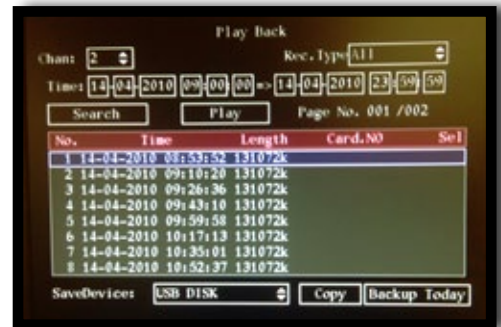
The Maxima series of DVR's support a choice of recording modes including Continuous, Motion and External Alarm. These recording modes are selectable in a schedule individually per camera per hour per day of the week.

Playback

The Maxima series of DVR's provide fast and user-friendly search options on play back. Cameras can be played back individually or up to 4 cameras synchronised using the Client software. Features include fast forward, pause, frame advance etc.



ABOVE: LOCAL DISPLAY



ABOVE: LOCAL PLAYBACK/BACKUP SCREEN

Incident Archiving

Backing up incidents is a simple process with the Maxima series. Select the date, start time, end time and camera required. Data can be backed up to CD-R/DVD-R disc via the Maxima's internal DVD burner, USB stick, hard drive or USB burner.

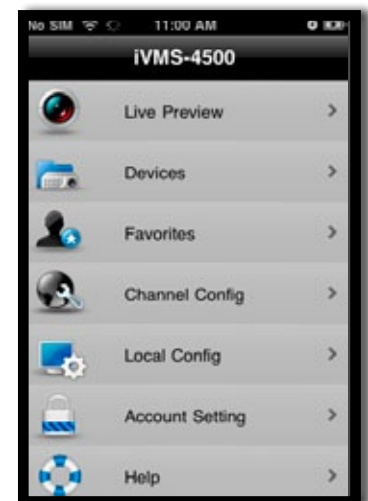
The backup can be performed direct to the DVD burner and will automatically include a compatible self-executable player that can be run directly from the CD or DVD disc without installation onto a PC. The self-executable player is beneficial to users that can't install software onto a PC because of limited access rights.

The backup file is encrypted and preserved in the native file format so it is compliant with recommended guidelines for admissibility of digital CCTV evidence in court. Backups can also be performed over a network, using the Client software.

iPhone Viewing options

Easy to use interface, features include:

- View up to 4 cameras simultaneously.
- PTZ control via multi-touch UI.
- 8 PTZ presets.
- View cameras from multiple DVR's.
- Take snapshot of current frame.



* SPECIFICATIONS

	MAX04MRS	MAX08MRS	MAX16MRS
Video Compression	H.264 (MPEG 4 PART 10)		
Preview Resolution	704x576 (D1 / 4CIF)		
Compression resolutions	704x579(4CIF) 528x384(DCIF), 704x288(2CIF) 352x288(CIF) 176x144(QCIF)		
No. Video Inputs	4 x BNC 1.0 Vp-p, 75Ω	8 x BNC 1.0 Vp-p, 75Ω	16 x BNC 1.0 Vp-p, 75Ω
Video Outputs	1 x Composite 1x SXGA	2 x Composite, 1x SXGA (800x600), (1024x768), (1280x1024)	
Frame Rates Per Camera	4CIF 6FPS, DCIF 8FPS, 2CIF 12FPS, CIF 25FPS		
Stream Type	Mixed - Video / Video and audio		
PTZ Support	RS422/485 Telemetry over twisted pair		
Bit Rate	32Kbs to 4Mbs selectable		
Audio Inputs	4 x bnc, 2.0Vp-p, 1KΩ	8 X BNC, 2.0Vp-p, 1KΩ	16 X BNC, 2.0Vp-p, 1KΩ
Audio Output	1 x BNC, Line Output, 600Ω		
Audio Compression	Ogg Vorbis, 16 Kbs		
USB interface	USB1.1, HDD, CD/DVD-R, MOUSE		
Video Motion Detection	Configurable on every channel		
Tamper Protection	Video Loss Alarm, Video Tamper Alarm		
Operating Environment	-10° - 55°C (humidity 10%-90% non condensing)		
Power Supply	180-265VAC or 90-135VAC, 47-63Hz		
Communications Ports	1 x RJ45 UTP 10Mbs/100Mbs (auto-sensing), 1x RS232, 1 x RS485		
External Back-up	USB / CD / DVD		
Dimensions	19" Rack Mounting (450mmW x 450mmD x 95mmH)		
Storage	4 HDD or 3HDD & CD/DVD-RW	8x Sata HDD or 4HDD & CD/DVD-RW	
**Removable HDD	**(OPTIONAL) Replaces internal CD/DVD-RW drive		
Power Consumption	22 - 42W (without HDD)		
Weight	8 Kg (without HDD and DVD drive.		
External Alarm Inputs	4	8	16
Relay Outputs	2	4	4
Mobile Viewing	iPhone, iTouch, iPad (OS V 3.1 +) Windows Mobile Professional 6, 6.5 (subject to compatability)		
	E&OE	*Specifications and features are subject to change without notice	MAX002 V1.2-20100422

CAMVEX VIDEO SURVEILLANCE SYSTEMS

SYSTEM DESIGN – SALES – DISTRIBUTION – RENTAL

CCTV

CAMVEX (VIC) PTY LTD
1860 DANDENONG RD,
PHONE 03 9543 4844
info@camvex.com.au

A.B.N. 86 100 905 048
CLAYTON VIC 3168
FAX 03 9543 4144
www.camvex.com.au

CCTV